

MANHATTAN

FOR CONTRACTING, CONSULTING
AND LOGISTICS SERVICES COMPANY



www.manhattan-ccl.com



Who We Are

Manhattan for Contracting, Consulting and Logistics Services was established in United States of America with branches in Kingdom of Jordan , Lebanon and Republic of Iraq.

Our mission is to professionally deliver any project, any time, in any environment for the benefit of our customers, shareholders, employees and the communities we serve.





Our Featured Products

Manhattan CCL provides a wide range of top quality products in different lines and sectors. We are working alongside our partners to meet our clients' demands and expectations. In few years, Manhattan CCL succeeded to gain customer trust, satisfaction, and high reputation.

Lighting

With the expansion of LED technology, lighting has become more optimized for different usage environments and started to play more reasonable and various roles instead of just simply providing illumination to the darkness.



Power

We procure, supply, install, commission and maintain a range of Power Generation, Power Transmission and Power Distribution products.





Healthcare

Manhattan CCL assists clients in delivering high-caliber, integrated solutions for infrastructure and operation of healthcare facilities. Let Manhattan CCL be your trusted medical solutions partner !



Water Treatment

Manhattan CCL plays a significant role in providing sustainable, cost-effective water solutions to meet the needs of diverse communities. Every project, large or small, is important to us, as we seek to optimize water management and infrastructure in environment-friendly ways.



Oil and Gas

We supply piping systems for sewers, water transmission/distribution, industrial and mining applications, oil and gas gathering, gas distribution, hydroelectric power generation, Factory Mutual (FM) approved fire suppression systems, drainage, and storm water retention/detention applications.



Irrigation

For the irrigation market, Manhattan CCL supplies complete or partial irrigation systems which we can deliver anywhere in the world. When we supply a complete irrigation system, we include every item, no matter how small, needed to install the irrigation system, from pump station to sprinklers and including but not limited to pipes, valves, wire, controllers, sprinklers, and fittings.



Security Products

Manhattan CCL provides solutions for Security Industry, including security products, security services, security training.



Elevators and Escalators

We supply, install and maintain world class Elevators and Escalators. From prestigious design and customization to legendary durability and total reliability, we engineer the right system for you. We're proud of our dedication to personal service and solutions shaped by individual needs.





FEATURED BRANDS

IŞIN daylight®



CMF
GLOBAL


Schröder 



LED solution offering **fastest
return on investment** for all
your R&U applications





 **AXIA**

AKILA



AMPERA


Main Characteristics

<u>Technical data</u>	
Light source	LED
Lamp type & power	Mini : 8 - 16 - 24 LEDs @ 350, 700 mA
	Midi : 32 - 48 - 64 LEDs @ 350, 700 mA
	Maxi : 96 - 112 - 128 LEDs @ 350, 700 mA
CRI	Typ 70
Optical block	IP66 / IK09
Recommended mounting height	4m – 12m
Electrical class	I & II
Materials (body & protector)	Aluminium / Flat Glass
Fixation	Hor/Vert : 32-48mm ; Hor/Vert : 42-60mm ; Vert 76mm
Low light pollution:	ULOR =0%
Lighting class	Lighting distributions according EU/US/ZAB classifications



MAIN APPLICATIONS COVERAGE

Roads, highways, large areas, urban streets, bridges, parkings...

PEDESTRIAN AREAS	STREETS		ROADS		
Pedestrian streets, paths, cyclepaths	Residential streets	Mixed traffic, commercial streets in urban areas	Rural roads	Motorized traffic, Roads in urban areas	Motorways, Highways, Express ways, Ringroads
					

<50/45W

>50/45W
<250W

HID Equivalent
<150W

>250W

Ampera Mini

Ampera Midi

Ampera Maxi





SOLUTIONS

SAFE AND RELIABLE SOLUTIONS WITH HIGH ADDED-VALUE

Schröder provides efficient lighting solutions for multiple airport areas.

Our offer covers the full scope of the project from design to after-sales services, including smart technology for a fast and easy installation, adaptive lighting, intelligent control systems and safety equipment.

Our dedicated solutions transform airports into safe, comfortable, sustainable and intelligent environments with engaging experiences for the users and operational benefits for the airport authorities, airlines and air traffic control managers.

SCHRÉDER SOLUTIONS INCREASE PRODUCTIVITY, REDUCE COSTS AND ELIMINATE DOWNTIME



SCHRÉDER PRODUCT PORTFOLIO RANGE

We Have An Extensive Product Portfolio To Suit The Various Landscapes Of An Airport. Some Are Designed To Light Specific Environments Like Aprons And Tunnels While Others Integrate Aesthetics To Suit Areas Where Passengers And Employees Spend Time. The Following Lighting Solutions Are A Limited Selection, Visit Our Website www.schreder.com Or Contact Your Local Schröder Office For Details Of The Full Range Available In Your Country.



YOX



TECEO



CMS



SMARTLUME



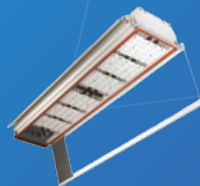
OMNIFLOOD



OMNIBLAST



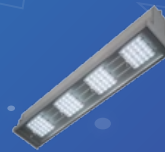
CONTILED



FV32



ASTRAL



GL2



OMNISTAR



STYLAGE



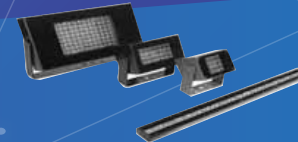
INOX



ALURA



PILZEO



SCULPCOLLECTION



SHUFFLE

E2T Series

VOLUMETRIC LAY-IN



10-0 dimming

Energetic Lighting's LED recessed troffer fixture provides for an ideal replacement option for traditional fluorescent tube recessed troffer fixtures. Standard 1x4, 2x2, and 2x4 troffer sizes available to suit any office application and layout. This troffer light can be used for general office lighting, providing suitable light without any of the maintenance issues associated with fluorescent tubes. Installation is quick and simple when mounting into standard T-grid suspended ceiling systems. Light output is dimmable with 0-10v systems. Constructed with a durable steel housing body and LED lifetime rating of at least 50,000 hours, this troffer is designed for many years of reliable operation.

Features

- No UV or IR radiation
- Dimmable with 0-10v systems
- Modern and efficient design
- Mercury-free construction
- Suitable for damp location use
- Easy and secure installation

Applications

- Architectural decor
- Overhead task lighting
- Ambient room lighting
- General lighting

Accessories - Surface-mount kits



E1T1-SMK



E1T-2SMK



E1T4-SMK



Order #:	60005	60006	60009	60010	60007	60008
Model:	E2T2A840	-36E2T2A850	-36E2T1A840	-36E2T1A850	-36E2T4A840	-40E2T4A850-40
Configuration:	2x2	2x2	1x4	1x4	2x4	2x4
Lumen Output:	4485 lm	4530 lm	4543 lm	4697 lm	5111 lm	5141 lm
Lum. Efficacy:	124 lm/W	126 lm/W	126 lm/W	130 lm/W	131 lm/W	132 lm/W
Beam Pattern:	*110	*110	*110	*110	*110	*110
Input Power:	36 W	36 W	36 W	36 W	39 W	39 W
Input Voltage:	277-120 Vac	277-120 Vac	277-120 Vac	277-120 Vac	277-120 Vac	277-120 Vac
Power Factor:	0.91	0.91	0.91	0.91	0.92	0.92
THD:	9	% 9	% 9	% 9	% 10	% 10
CCT:	4000 K	5000 K	4000 K	5000 K	4000 K	5000 K
CR:	85	86	84	86	85	86
Lifetime:	50000 hours	50000 hours	50000 hours	50000 hours	50000 hours	50000 hours
Warranty:	5 Years	5 Years	5 Years	5 Years	5 Years	5 Years
Dimmability:	(10-0v)	(10-0v)	(10-0v)	(10-0v)	(10-0v)	(10-0v)
Op. Temp.:	*9-F to *104F	*9-F to *104F	*9-F to *104F	*9-F to *104F	*9-F to *104F	*9-F to *104F
Environment:	Damp Rated	Damp Rated	Damp Rated	Damp Rated	Damp Rated	Damp Rated
Weight:	9 lbs	9 lbs	10 lbs	10 lbs	15 lbs	15 lbs
Certifications:	DLC Standard	DLC Standard	DLC Standard	DLC Standard	DLC Standard	DLC Standard
Dimensions:	23.8"x23.8"x23.8	*3.9"x23.8"x47.8	*3.9"x11.8"x47.8	*3.9"x11.8"x47.8	*3.9"x23.8"x47.8	*3.9"x23.8"x3.9"

Please visit www.energeticlighting.com for the most up-to-date information.

E1PL Series

FLAT PANEL



Energetic Lighting's LED flat panel light fixture provides an attractive skylight appearance applications using Light Guide Technology. Standard 1x4, 2x2, and 2x4 drop ceiling sizes available to suit any office application and layout. This panel light can be used for office, classroom, conference room, or other general lighting applications, providing light without any of the maintenance issues associated with fluorescent tubes. Installation is quick and simple when mounting into standard drop-in T-grid suspended ceiling systems. Emergency Back Up options are available. Anchor hooks at each corner are also provided for suspended cable mounting as well. Constructed with aluminum framed body and LED lifetime rating of at least 50,000 hours.

Features

- No UV or IR radiation
- Modern and efficient design
- Mercury-free construction
- Suitable for damp location use
- Standard T-Grid drop ceiling installation
- Dimmable with 0-10v systems

Applications

- Architectural decor
- Overhead task lighting
- Ambient room lighting
- General lighting

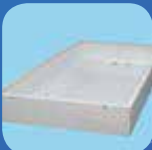
Accessories - Surface-mount kits



EIT-1SMK



EIT-2SMK



EIT-4SMK



Order #:	65001	65002	65003	65004	65005	65006
Model:	E1PL2A36D-840	E1PL2A36D-850	E1PL4A60D-840	E1PL4A60D-850	E1PL1A36D-840	E1PL1A36D-850
Configuration:	2x2	2x2	2x4	2x4	1x4	1x4
Lumen Output:	3600 lm	3600 lm	6000 lm	6000 lm	3600 lm	3600 lm
Lum. Efficacy:	100 lm/W	100 lm/W	100 lm/W	100 lm/W	100 lm/W	100 lm/W
Beam Pattern:	110°	110°	110°	110°	110°	110°
Input Power:	36 W	36 W	60 W	60 W	36 W	36 W
Input Voltage:	120-277 Vac	120-277 Vac	120-277 Vac	120-277 Vac	120-277 Vac	120-277 Vac
Power Factor:	0.92	0.92	0.94	0.94	0.93	0.93
THD:	15 %	15 %	10 %	10 %	13 %	13 %
CCT:	4000 K	5000 K	4000 K	5000 K	4000 K	5000 K
CRI:	80	80	80	80	80	80
Lifetime:	50000 hours	50000 hours	50000 hours	50000 hours	50000 hours	50000 hours
Warranty:	5 Years	5 Years	5 Years	5 Years	5 Years	5 Years
Dimmability:	0-10v	0-10v	0-10v	0-10v	0-10v	0-10v
Op. Temp.:	-9°F to 104°F	-9°F to 104°F	-9°F to 104°F	-9°F to 104°F	-9°F to 104°F	-9°F to 104°F
Environment:	Damp Locations	Damp Locations	Damp Locations	Damp Locations	Damp Locations	Damp Locations
Weight:	8lbs	8lbs	15lbs	15lbs	9lbs	9lbs
Certifications:	DLC Standard	DLC Standard	DLC Standard	DLC Standard	DLC Standard	DLC Standard
Dimensions:	23.8" x 23.8" x 2"	23.8" x 23.8" x 2"	47.8" x 23.8" x 2"	47.8" x 23.8" x 2"	47.8" x 11.8" x 2"	47.8" x 11.8" x 2"

Please visit www.energeticlighting.com for the most up-to-date information.

4" & 6" Retrofit Downlight Kits

DOWNLIGHT



Energetic Lighting's E2DL09D4, E2DL11D6, E2DLB, and E2DL18D6 series of LED downlight retrofit kits provides an elegant solution for converting existing recessed cans into LED fixtures. Available in 4-inch and 6-inch can sizes operating at 8.5-watt, 10.5-watt, and 18-watt versions, with a beam angle of 90°, and dimmable down to 10%. An improved "slip-in" friction fit mounting clip for the 6-inch model prevents the clips from being damaged during removal from the downlight housing. Comprising of a durable die-cast aluminum construction and a LED lifetime rating of 36,000 (18W models) or 50,000 hours, this robust downlight is designed for many years of reliable operation.

Features

- "Easy Fit" clips
- Elegant and efficient design
- Mercury-free construction
- Suitable for use in Type-IC and
- Non-IC recessed can fixtures
- Suitable for damp location use
- Die cast body
- Dimmable

Applications

- Architectural decor
- Overhead accent lighting
- Spot area lighting
- General lighting



Order #:	50014	50015	50016	50017	50018	50019	50029	50030	50022	50023
Model:	E2DL09D4-827	-830	-840	E2DL11D6-827	-830	-840	E2DLB11D6-830	-840	E2DL18D6-830	-840
Configuration:	4-inch			6-inch			6-inch		6-inch	
Lumen Output:	500 lm			650 lm			650 lm		1200 lm	
Lum. Efficacy:	59 lm/W			62 lm/W			62 lm/W		67 lm/W	
Beam Pattern:	90°			90°			90°		90°	
Input Power:	8.5 W			10.5 W			10.5 W		18 W	
Input Voltage:	120 Vac			120 Vac			120/277 Vac		120 Vac	
Power Factor:	0.96			0.97			0.95		0.95	
THD:	<20 %			<20 %			<20 %		<20 %	
CCT:	2700 K			2700 K			3000 K		3000 K	
CR:	83			85			84		82	
Lifetime:	50000 hours			50000 hours			50000 hours		36000 hours	
Warranty:	5 Years			5 Years			5 Years		5 Years	
Dimmability:	Triac dimmable			Triac dimmable			(120V only)		Triac dimmable	
Op. Temp:	-4°F to 104°F			-4°F to 104°F			-4°F to 104°F		-4°F to 104°F	
Environment:	Damp Rated			Damp Rated			Damp Rated		Damp Rated	
Weight:	0.8lbs			0.7lbs			0.7lbs		0.7lbs	
Certifications:	ES ES ES			ES ES ES			ES ES		ES ES	
Dimensions:	5"(D) x 2.8"(H)			7.4"(D) x 3"(H)			7.4"(D) x 3"(H)		7.4"(D) x 3"(H)	

Please visit www.energeticlighting.com for the most up-to-date information.

URBAN DECORATIVE STREET LIGHTING POLES

The main items of the product range are composed of polygonal and round conical galvanized steel lighting poles, floodlight poles, high masts, stadium lighting poles, flag poles, traffic sign poles, GSM poles, lightning, speaker, camera and advertisement poles. On the other hand, the design and producti-on of any other special-purpose pole is realized according to customers demand.





Our products consist of cabins, suspensions and doors. Our actual power is to accomplish the production of the optional products with special solutions. We have the right pride of making our vision real in short time with our ISO 9001 and OHSAS 18000 accreditations which are the confirmation of our quality and the interests given to our products.



Kabin Karkas



Ağır Karkas



Kıyı Dibi & Son Kat Malzeme Az Dönüşümüne Özel Çözüm
MRL TERS L KARKAS

Kabin Karkas



HYDROLİK L KARKAS

MRL Makine Şaşı



MARCO

F3800

DETAYLAR
Kabinin İçerisinde
Kabinin İçerisinde
Kabinin İçerisinde
Kabinin İçerisinde
Kabinin İçerisinde

DETAYLAR
Kabinin İçerisinde
Kabinin İçerisinde
Kabinin İçerisinde
Kabinin İçerisinde
Kabinin İçerisinde



SEVE

F3900

DETAYLAR
Kabinin İçerisinde
Kabinin İçerisinde
Kabinin İçerisinde
Kabinin İçerisinde
Kabinin İçerisinde

DETAYLAR
Kabinin İçerisinde
Kabinin İçerisinde
Kabinin İçerisinde
Kabinin İçerisinde
Kabinin İçerisinde





The only solution available that has no impact on Wi-Fi, Bluetooth and Mobile Phones and that can intercept and disable drones without damaging or destroying them.



Unpack, Position, Turn On – PROTECT
Standalone Automated Area Protection Zone

UF 1000



- One solution for all drone threat scenarios – Fixed position assets, Temporary positioned assets and Mobile assets.
- Works effectively as a mobile unit backpack or vehicle mounted, and, deployed to protect fixed position assets such as buildings, stadiums, public gatherings etc.
- Large area protection is delivered using multiple intersecting units.
- Manages over 70% of the drones in use today with no need for training or expertise.
- Simply position, Turn on and **AUTO-PROTECT**.

All you need is power and a mounting spot.

Units are available in Standard or Professional form. Professional can handle drone 'SWARMS' with up to five concurrent intercepts.

DRONE SERVICES

The DragoPod™ is a super-carrier featuring great flexibility designed for wide range of applications and carrying up to 50kg loads. Medical equipment, dual Red epics for filming in 3D, or as a carrier of smaller sUAV drones, the Pod Drone Platform™ DragoPod™ sparks the imagination of military & commercial professionals all over the world. The sUAV Drones are FAA Certified Aircraft.

Pro-level cinematography, surveillance, aerial response and other markets that required heavy payloads with long flight time.



CCTV SOLUTIONS



IPS has partnered with some of the very best manufacturers, distributors and installers of CCTV hardware and software solutions, allowing for a huge and diverse range of products that will cover all your needs.

What we have to offer will include the very latest that the industry has to offer in thermal imaging, facial recognition, low light technology, all-encompassing analytics, recording and storage solutions, up-to-date General Data Protection Regulation (GDPR) compliance and regular software updates and upgrades to meet all your requirements.

Special care will be made to ensure that the best possible solutions are offered to you, with an emphasis on the very highest quality bespoke products, service and after sales service designed to give you confidence in the products and peace of mind as a result of the long term after care that we provide.



THE BENEFITS OF QULU

QUICK INSTALLATION

The small download size and easily optimised camera settings mean that installation times are massively reduced. qulu will discover cameras on your network and automatically configure them for you. Each time a new camera is added to the system, it will be discovered and configured automatically.

A USER INTERFACE YOU'LL WANT TO USE

qulu is designed entirely around the user experience. We've not based it around anything else in the industry, we've designed it around you - that's why it's so intuitive, simple and easy to use. You won't need extensive training courses; you just need to start using the software. You'll be amazed by how quickly you're interrogating video like never before.

PACKING A SERIOUS PUNCH

Making software powerful, whilst preserving its simplicity, requires the application of some seriously advanced technologies and qulu is packed full of them. Built on a rock-solid foundation qulu provides unparalleled stability and supports an industry-leading number of cameras on a single server. The software takes full advantage of multi-core processors and, combined with the incredible graphics capabilities, gives you unprecedented video management power.

SINGLE CLICK, SYSTEM-WIDE UPGRADES

System administrators can quickly upgrade an entire system (all servers and clients in a system can be upgraded regardless of operating system or device type) to a newer version or to a specific build from any client connected to the system.



AquaFuse®: HDPE Piping Systems:
Built tough; built to last. Delivers exceptional value, unwavering reliability and remarkable advantages over conventional piping systems.

AquaFuse is CMF Global's own HDPE system of piping solutions, including AquaFuse HDPE pipe, AquaFuse HDPE valves and AquaFuse HDPE fittings.

Made from high density polyethylene (HDPE), AquaFuse delivers exceptional value, unwavering reliability and remarkable advantages over conventional piping systems. AquaFuse is a superior choice for all irrigation and all pressure applications.

AquaFuse is available in sizes from "1 to "54 and some sizes can be ordered in coils, reels, or sticks. The long lengths eliminate multiple joints. AquaFuse is rated for surge pressure up to 1.5 times the rated working pressure. This eliminates the water hammer problem that other piping systems have always endured.



CorrDrain®: Environmentally-Conscious
High performance engineered blend of high density polyethylene material containing %50 minimum recycled content product is ideally suited for green projects.

CorrDrain is CMF's high density polyethylene plastic pipe containing a minimum of %50 recycled HDPE. It is the ideal choice for high-volume watertight gravity-flow drainage applications especially where an environmentally-conscious product is demanded.

CorrDrain features a watertight integral bell and spigot coupling system, which allows for quick and easy installation reducing costs while increasing efficiency. The watertight validation helps to ensure field performance with reduced joint infiltration/exfiltration. CorrDrain's low Manning's "n" value of 0.012 allows for greater flow capacity and reduces sediment or debris build-up.

CorrDrain's lightweight and easy field manipulation saves time, labor, and allows for the use of smaller equipment. Fittings are offered in standard and custom sizes to meet your specific needs and reduce field fabrication and costly structures. CorrDrain is manufactured to meet ASTM D3212 watertight laboratory test requirements. The finished product and material performance exceed the requirements of AASHTO M294 or ASTM F2306.



Hydroelectric Power Plants

CMF Global is your single-source supplier for all of your power generating equipment including the turbine, generator, mounting frames, turbine inlet valve, automated controls, switchgear, and electric transmission cable.

Efficiency and durability are the highest priorities for our powerhouse packages. Turbines are closely matched with generators early in the design stage to ensure optimum integration and efficiency. Generators are selected to meet the rigorous demands of hydroelectric environments. Embeddable mounting frames are carefully designed and fabricated to ensure precise alignment between turbine-generator components.

Controls and switchgear are engineered to meet the intertie requirements and control schemes of each individual project. For stand-alone projects, complete electro-hydraulic governing systems are employed to provide stable, utility-quality power for remote sites.



Irrigation – Commercial, Agricultural, and Golf

Within the US, we supply our AquaFuse line of High Density Polyethylene (HDPE) pipe, valves, and fittings for irrigations systems. AquaFuse is supplied through our irrigation distribution network. It carries a 25 year limited warranty against manufacturing defects and includes our AquaFUSION training program to insure that the installation crews are proficient in fusing our HDPE products.

Included in the AquaFuse line of HDPE irrigation products are our fusible branch saddles, our AquaFuse swing joint, and our specialized valves for HDPE irrigation systems. The heat fused AquaFuse components have a zero allowable leakage rate.

Outside the US, we supply complete or partial irrigation systems. These irrigation systems can be the traditional Polyvinyl Chlorate (PVC)/Ductile Iron systems or the newer HDPE systems. The component pipe, valves, fittings, wire, controllers, pump station etc. are manufactured from High Density Polyethylene (HDPE) (AquaFuse), Polyvinyl Chlorate (PVC), or Ductile Iron. For either system type, we make sure that the various system components are properly matched to each other.





ultimate solutions

MANHATTAN

FOR CONTRACTING, CONSULTING
AND LOGISTICS SERVICES COMPANY

USA Office

1 Radisson Plaza, Ste #800
New Rochelle, NY 10801
Tel: +1 914 498 1501

Amman Office

161 Shareef Nasir Bn Jameel Street
Tilaa Al Ali - Amman 11196 , Jordan
Tel: +962 795 791 123

Baghdad Office

Al Mansour District
Baghdad - Iraq
Tel: +964 7704 229 207

Lebanon Office

Achrafieh, Saydeh Str. Carmel Building
Beirut - Lebanon
Tel: +961 3201294

www.manhattan-ccl.com

E-mail: info@manhattan-ccl.com